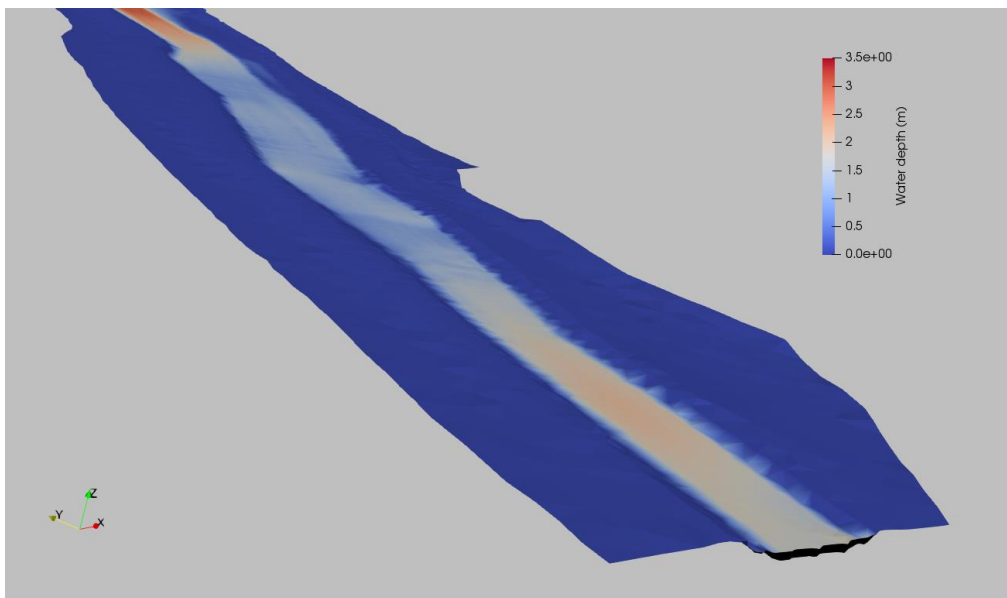


3D flood prevention at Rambla del Albuji3n (Murcia; Spain)

Client: Own development

Keywords: Flood routing; prevention; sediment transport



Summary: Flood routing is a procedure to determine the time and magnitude of flow (i.e., the flow hydrograph) at a point on a watercourse from known or assumed hydrographs at one or more points upstream. The software BASEMENT (ETHZ) has been used to model a hypothetical flood at the Rambla del Albuji3n, in Spain. Changes in river morphology caused by sedimentation and erosion were included in the model. Scenario analysis was carried out, including the implementation of mitigation measures (e.g., river widening) and different inlet hydrographs.